

RENEWABLE ENERGY IN TRANSPORT BAROMETER

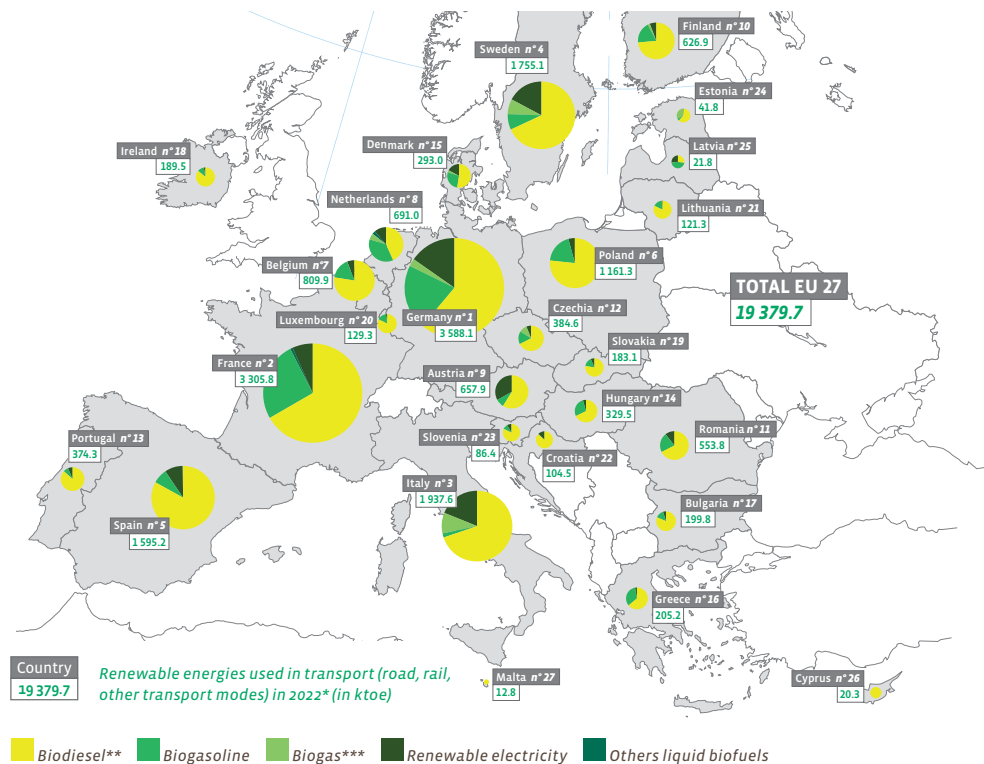


FREE DOWNLOAD
ENGLISH: <https://www.eurobserv-er.org/>

The preliminary data gathered by EurObserv'ER suggests that renewable energy consumption in European Union transport (road, rail, maritime or air transport), driven by combustion or electric engines, increased by about 2.0 % between 2021 and 2022, to almost 19.4 Mtoe. The renewable energy share of European Union transport, as defined by the Renewable Energy Directive (RED II), should inch forwards towards the 10% threshold in 2022 through the application of the incentives arising from greater use of advanced

biofuels and the development of electrification in road transport. EurObserv'ER's preliminary estimates suggests that the European Union's biofuel consumption (in energy content) remained stable at about 17.1 Mtoe in 2022. The initial data collected or estimated by EurObserv'ER for 2022 puts renewable electricity consumption in transport at 2.2 Mtoe (equating to 25.9 TWh of electricity consumption), marking a year-on-year increase of approximately 18.4%.

Renewable energies used in transport (road, rail, other transport modes) in 2022* (in ktce)



* Estimation; ** Including HVO; *** Including biomethane blended in the natural gas grid allocated to the transport sector with appropriate traceability requirements. Source: EurObserv'ER 2023.

+ 2.0 %

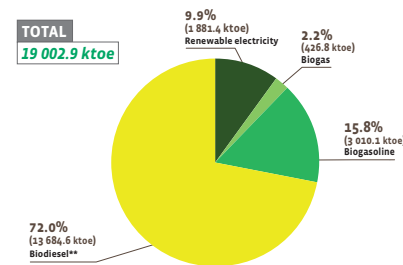
The increase of renewable energy consumption for transport in the EU27

17.2 Mtoe

Total biofuel consumption in 2022 in the EU 27

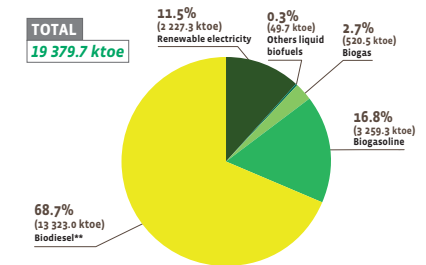


Breakdown of renewable energy used in transport (all types) of the countries of the EU to 27 (in ktce and %) in 2021



*Estimation. **Including HVO. Source: EurObserv'ER 2023.

Breakdown of renewable energy used in transport (all types) of the countries of the EU to 27 (in ktce and %) in 2022*



FURTHER INFORMATION

ANNUAL REPORT: "The State of Renewable Energies in Europe", 21st edition, www.eurobserv-er.org/21st-annual-overview-barometer/

DATABASE: www.eurobserv-er.org/online-database

GRAPHS: www.eurobserv-er.org/press-corner-graphs-and-tables

TWITTER: twitter.com/EurObserv_ER

PRESS RELEASES: www.eurobserv-er.org/download-press-releases

The next barometer will cover solid biofuels

DISCLAIMER

This barometer was prepared by Observ'ER in the scope of the EurObserv'ER project, which groups together Observ'ER (FR), TNO (NL), Renewables Academy (DE), Fraunhofer-ISI (DE), VITO (BE) and CBS Statistics Netherlands (NL). The information and views set out in this publication are those of the author(s) and do not necessarily reflect the official opinion of the Commission. The Commission does not guarantee the accuracy of the data included in this study. Neither the Commission nor any person acting on the Commission's behalf may be held responsible for the use which may be made of the information contained therein.

